

UPDD Driver Installation

b¹ beetronics

Table of contents

02	Section 1: Installing the drivers and application
07	Section 2: Enable the touch functionality based on your setup

Section 1 - Installing the drivers and application

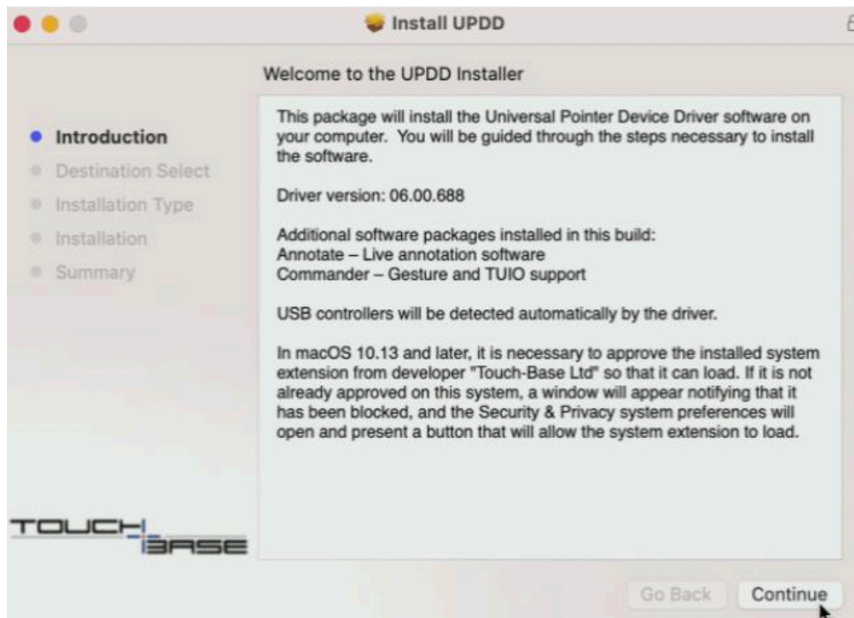
Installing the drivers and application

To install the driver and application, you require an administrator account due to the multiple layers of security and features that need to be enabled. If you are unsure if your account has these privileges, you can verify this in System Preferences - Users & Groups. Under the account which will be used for installation, you should see "Administrator". If your account does not have administrator privileges, contact your system administrator.

Note: Do not connect the USB and HDMI cables between the Mac device and CTOUCH display. This step will be done in section 2.

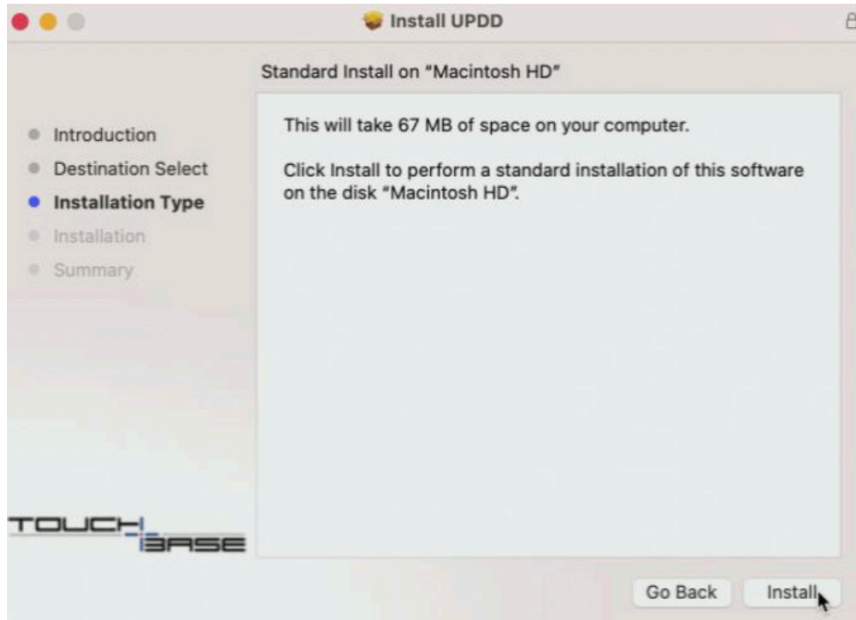
- **Step 1:** You can download the driver here. Go to the location where you have downloaded the CTOUCH driver. In this case, the file is located on the desktop.
- Unzip the archive TOUCH enable on Mac devices.zip and locate UPDD_xx_xx_xxx.dmg.
- **Step 2:** Double click on the driver UPDD_xx_xx_xxx.dmg. macOS will mount the driver as a USB folder and open a new window where you can see the installation package UPDD_xx_xx_xxx.pkg.
- **Step 3:** Double click on the UPDD_xx_xx_xxx.pkg to start the installation of the driver and application.

Press "**Continue**" when are you ready to proceed.

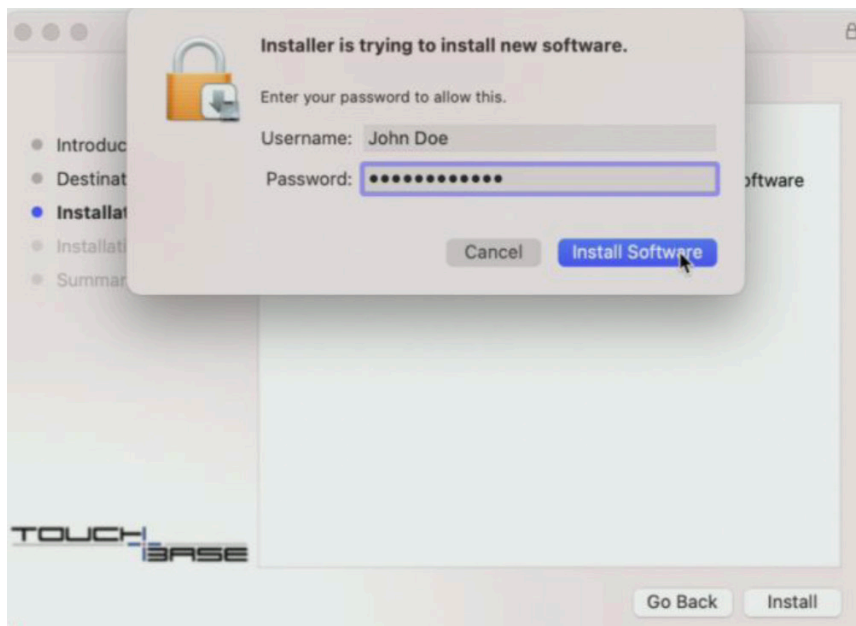


Section 1 - Installing the drivers and application

- **Step 4:** On **"Destination Select"** press continue without making any changes
- **Step 5:** On **"Installation Type"**, press install without making any changes



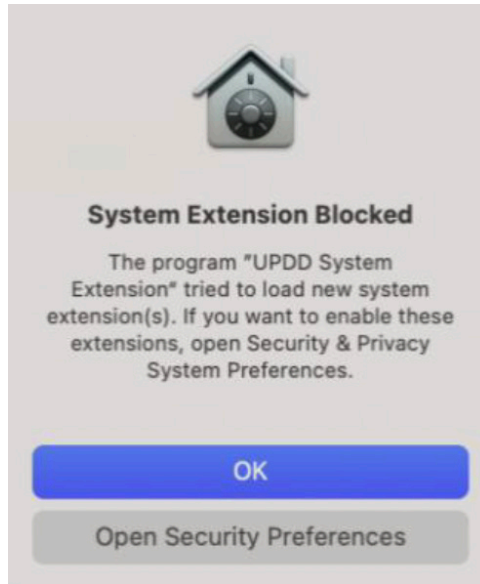
- **Step 6:** A dialog box will now open, please enter [the administrator's] username and password, then press **"Install Software"**



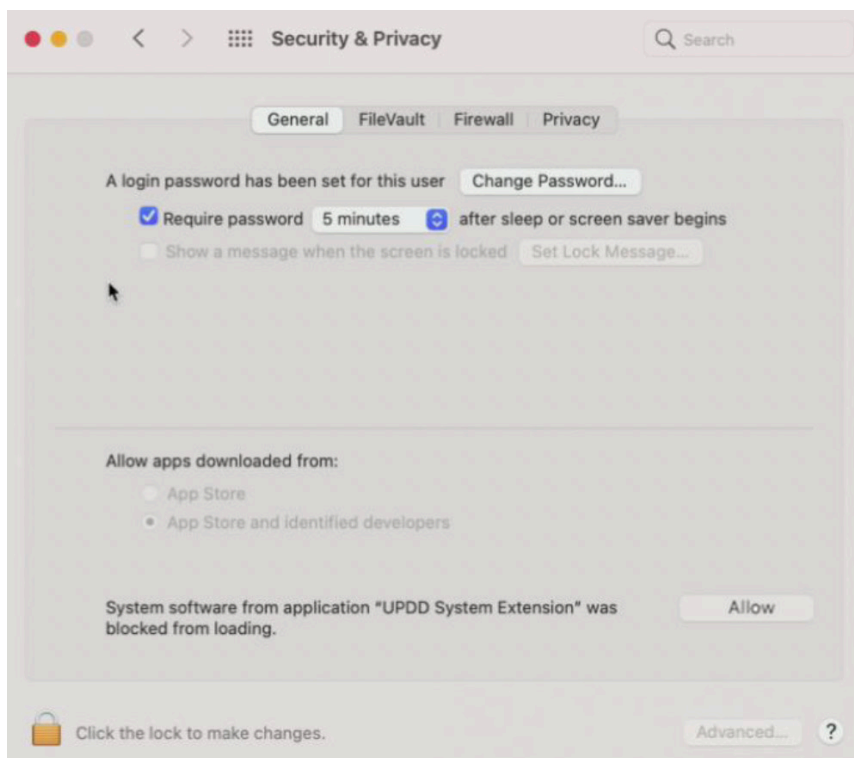
Section 1 - Installing the drivers and application

- **Step 7: IMPORTANT** Allowing the extensions is a mandatory step during the installation and is required for proper functionality.

Press **Open Security Preferences**. This will open the **Security Settings**.

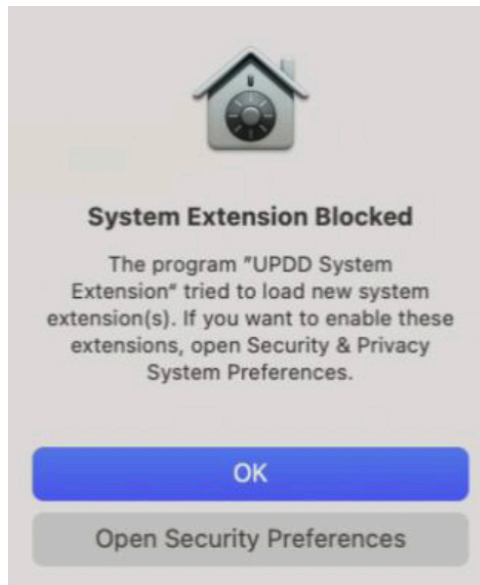


Press the **Allow** button to allow **UPDD System Extensions** to load and install all drivers. You may need to first unlock the option by clicking on the small lock icon.



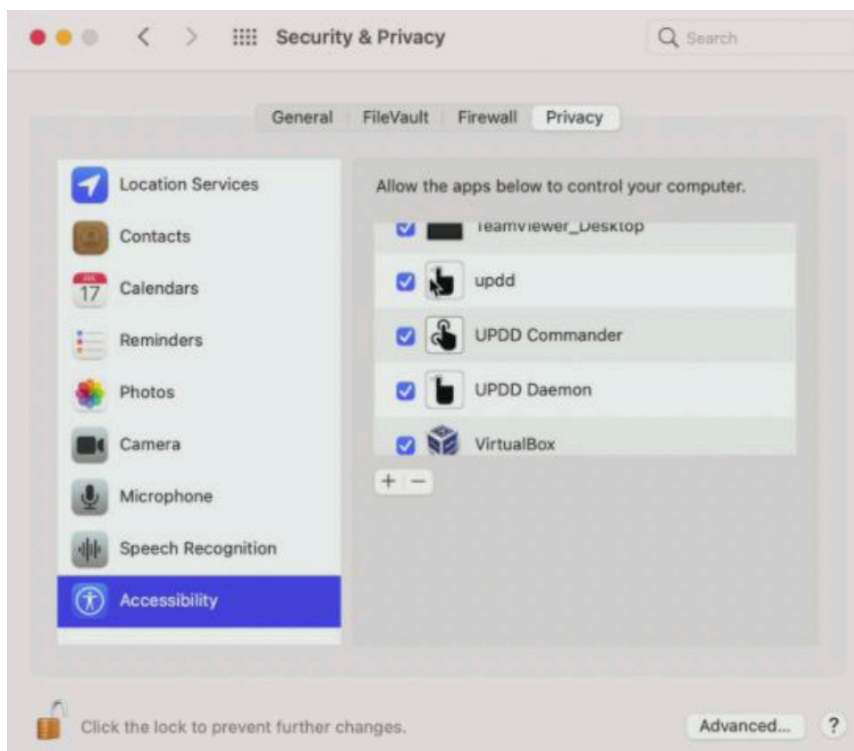
Section 1 - Installing the drivers and application

The System Extension Blocked windows will be closed automatically and finish the installation. Although the installation has finished, press **Open System Preferences** to grant the needed permissions.



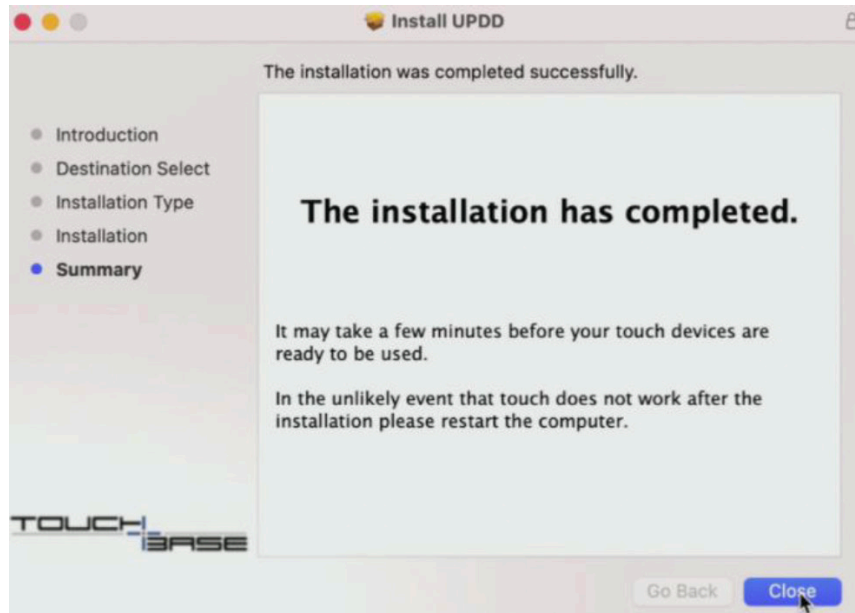
After opening the **Security Preferences**, find the **Privacy** tab. Click on the Lock button in the bottom-left corner of the window. Enter the log-in details for the administrative account again.

Now tick the three UPDD items (**updd**, **UPDD Commander**, and **UPDD Daemon**). This action will allow the application to start with the Mac device and process the gestures correctly. Your setup should be 'checked' like in the picture below.



Section 1 - Installing the drivers and application

- **Step 8:** Finish the installation. The application will continue with the installation and register all the components for another 1-2 minutes. Please wait until the installation is completed.



- **Step 9:** Press the Close button to exit the installer. You may now safely delete the installer package by pressing "**Move to Trash**"
- **Step 10:** Restart the device by pressing the Apple logo in the top left corner and then press "**Restart**". Afterwards you may proceed to section 2

Enable the touch functionality based on your setup

In this section, we will connect all devices and test the touch functionality.

- **Step A:** Connect your device and the TOUCH display with an HDMI-cable. Set the source of the CTOUCH display to HDMI. The picture will be mirrored (showing the same image on both screens) by default. This can be changed later in **System Preferences**.
- **Step B:** Connect your device and the TOUCH display with the included USB-cable. Look for the TOUCH OUT port on the display (some displays have multiple TOUCH OUT ports). You can use any USB-port on your device.
- **Step C:** Your Mac device will show the notification "UPDD device connected". The message indicates that CTOUCH capabilities have been detected and enabled.

